



**India Meteorological Department
(Ministry of Earth Sciences)**

HOURLY UPDATE ON CYCLONIC STORM 'GULAB'

BULLETIN NO. 13

DATE: 26-09-2021

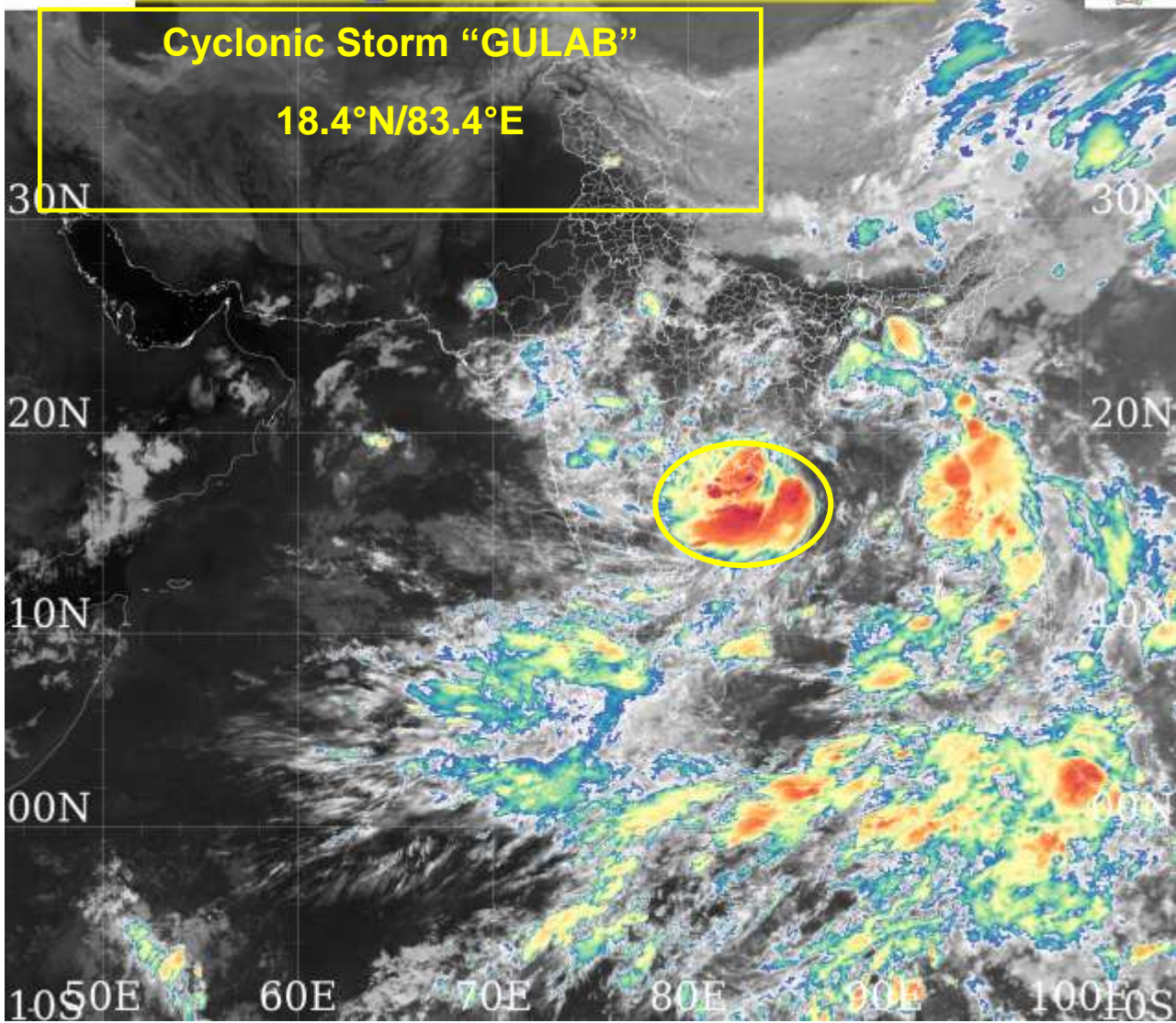
TIME OF ISSUE: 0120 HRS IST

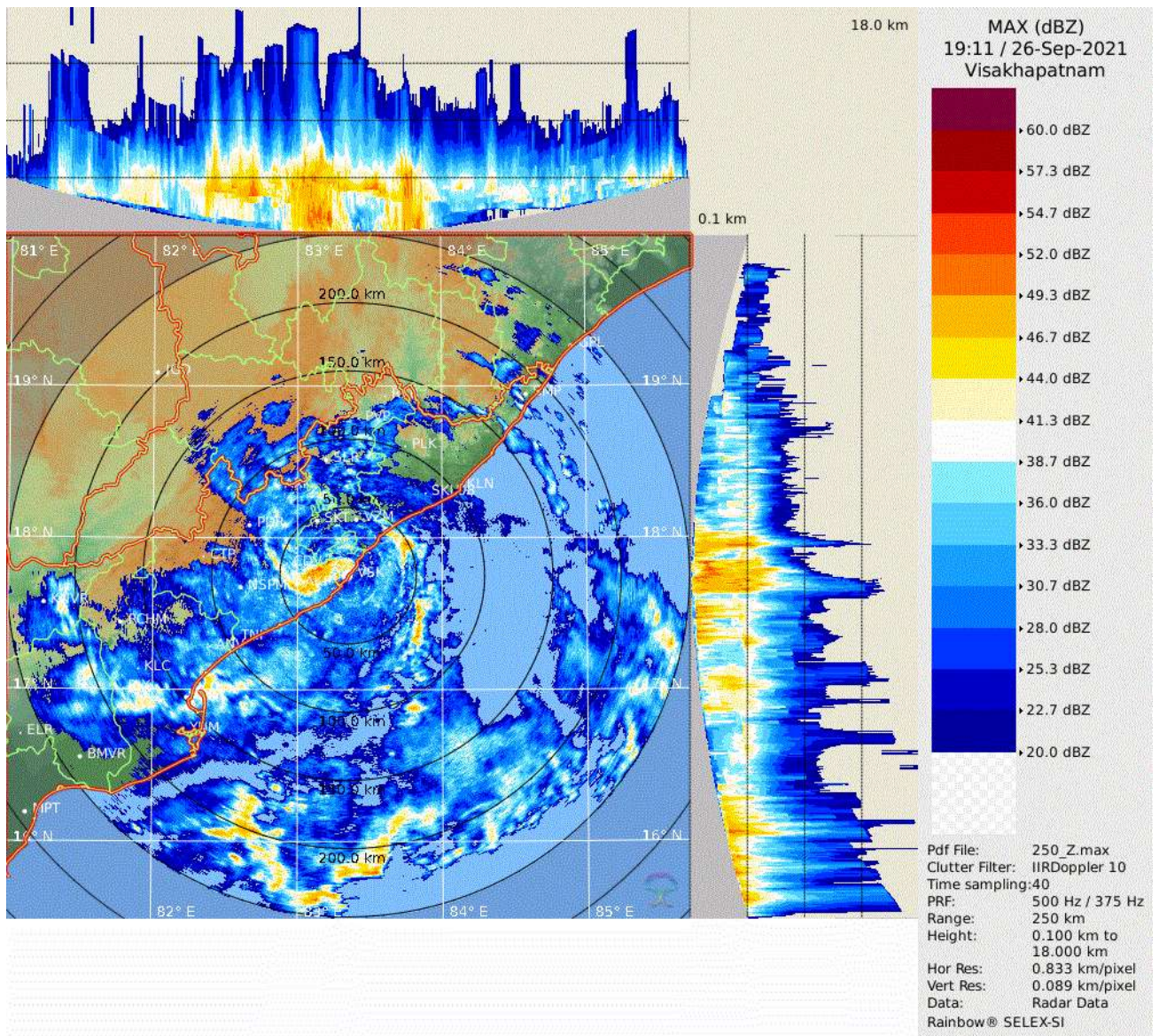
DATE/TIME (IST) OF OBSERVATION	BASED ON 26-09-2021 (2330 HRS IST)
LOCATION LATITUDE/LONGITUDE	THE CYCLONIC STORM 'GULAB' (PRONOUNCED AS GUL-AAB) OVER NORTH COASTAL ANDHRA PRADESH MOVED NEARLY WESTWARDS WITH A SPEED OF 21 KMPH DURING LAST 06 HOURS, LAY CENTRED AT 2330 HRS IST OVER NORTH COASTAL ANDHRA PRADESH AND ADJOINING SOUTH ODISHA NEAR LAT. 18.4°N AND LONG. 83.4°E, ABOUT 190 KM WEST-SOUTHWEST OF GOPALPUR (ODISHA) & 70 KM WEST OF KALINGAPATNAM (ANDHRA PRADESH). LIKELY TO MOVE NEARLY WESTWARDS AND WEAKEN INTO A DEEP DEPRESSION DURING NEXT 2-3 HOURS.
CURRENT INTENSITY	60-70 KMPH GUSTING TO 80 KMPH
PAST MOVEMENT	MOVED NEARLY WESTWARDS WITH A SPEED OF 21 KMPH DURING PAST 06 HOURS.
FORECAST MOVEMENT AND INTENSITY	IT IS LIKELY TO WEAKEN INTO DEEP DEPRESSION DURING NEXT 4-5 HOURS AND MOVE NEARLY WESTWARDS.
FORECAST RAINFALL	27TH SEP: LIGHT TO MODERATE RAINFALL AT MOST PLACES WITH HEAVY TO VERY HEAVY & EXTREMELY HEAVY RAINFALL (≥ 20 CM) AT ISOLATED PLACES VERY LIKELY OVER SOUTH CHHATTISGARH ; HEAVY TO VERY HEAVY FALLS AT ISOLATED PLACES OVER ODISHA, TELANGANA & VIDARBHA AND HEAVY RAINFALL AT ISOLATED PLACES OVER COASTAL WEST BENGAL & NORTH CHATTISGARH.
FORECAST WIND SPEED (KMPH)	60-70 KMPH GUSTING TO 80 KMPH FOR NEXT 2 HOURS AND GRADUALLY DECREASE THEREAFTER
OBSERVED RAINFALL (MM) (FROM 0830 HRS IST OF 26.09.2021)	RAINFALL: KALINGAPATNAM-108, VISAKHAPATNAM-129

THIS IS THE LAST HOURLY BULLETIN, HOWEVER THREE HOURLY NATIONAL BULLETIN FOR THE SYSTEM WILL CONTINUE



60E 70E 80E 90E
MSG-1: SEVIRI [colorized_ir_clouds]
20210926_1915UTC





Reflectivity imagery from Doppler weather RADAR Visakhapatnam based on 0041 hrs IST of 27th September 2021.



OBSERVED AND FORECAST TRACK ALONGWITH QUADRANT WIND DISTRIBUTION OF CYCLONIC STORM GULAB OVER NORTH ANDHRA PRADESH AND ADJOINING SOUTH ODISHA BASED ON 1800 UTC OF 26TH SEPTEMBER, 2021



DATE/TIME IN UTC

IST=UTC + 0530

L: LOW PRESSURE AREA

WML: WELL MARKED LOW PRESSURE AREA

D: DEPRESSION (17-27 KT)

DD: DEEP DEPRESSION (28-33 KT)

CS: CYCLONIC STORM (34-47 KT)

SCS: SEVERE CYCLONIC STORM (48-63KT)

VSCS: VERY SEVERE CYCLONIC STORM (64-89 KT)

ESCS: EXTREMELY SEVERE CYCLONIC STORM (90-119 KT)

SuCS: SUPER CYCLONIC STORM (≥ 120 KT)

● LESS THAN 34 KT

○ 34-47 KT

⊙ ≥ 48 KT

— OBSERVED TRACK

— FORECAST TRACK

▲ CONE OF UNCERTAINTY

AREA OF MAXIMUM SUSTAINED WIND SPEED:

■ 28-33 KT (52-61 KMPH)

■ 34-49 KT (62-91 KMPH)

■ 50-63 KT (92-117 KMPH)

■ ≥ 64 KT (≥118 KMPH)

IMPACT OVER THE SEA

MSW (knot/kmph)	Impact	Action
28-33 (52-61)	Very rough seas	Total suspension of fishing operations
34-49 (62-91)	High to very high seas	Total suspension of fishing operations
50-63 (92-117)	Very high seas	Total suspension of fishing operations
≥ 64 (≥118)	Phenomenal	Total suspension of fishing operations



OBSERVED AND FORECAST TRACK OF CYCLONIC STORM GULAB OVER NORTH ANDHRA PRADESH AND ADJOINING SOUTH ODISHA BASED ON 1800 UTC OF 26TH SEPTEMBER, 2021



DATE/TIME IN UTC
IST=UTC + 0530
L: LOW PRESSURE AREA
WML: WELL MARKED LOW PRESSURE AREA
D: DEPRESSION (17-27 KT)
DD: DEEP DEPRESSION (28-33 KT)
CS: CYCLONIC STORM (34-47 KT)
SCS: SEVERE CYCLONIC STORM (48-63KT)
VSCS: VERY SEVERE CYCLONIC STORM (64-89 KT)
ESCS: EXTREMELY SEVERE CYCLONIC STORM (90-119 KT)
SuCS: SUPER CYCLONIC STORM (\geq 120 KT)

- LESS THAN 34 KT
- 34-47 KT
- \geq 48 KT
- OBSERVED TRACK
- FORECAST TRACK
- CONE OF UNCERTAINTY